



Date: March 27, 2017

To: Mike Bowes
 Tri Pointe Homes, LLC
 2010 Crow Canyon Pl, Suite 380
 San Ramon, CA 94583
 AND
 Jared Frey
 Carlson Barbee & Gibson
 2633 Camino Ramon, Suite 350
 San Ramon, CA 94583

Requestor: AQUA
 Discretionary Rev: SAM2017-00002
 Permitting File#: BLD2017-02169 TO
 BLD2017-02174
 SP#: 72-0295
 APN#: 507 045500103; 507 045500200
Zip Code: 94539
 Fire ESZ | Box/S-Dist: 09-480 | 9-1/91A1
Address For: Residential

Re: Addresses for Tract 8229

To Whom It May Concern:

In response to your request for addresses needed for a new residential subdivision, a total of ninety-three (93) new addresses have been assigned. Also, two (2) existing addresses (i.e. 39393 & 39439 Mission Blvd) have been reused and relocated. For a full inventory and description of the addresses, please refer to Table “A”. The enclosed Addressing Plan illustrates the proper use and placement of the new and existing addresses.

Electronic copies of this letter and documentation will be posted to the City’s web site at http://gis.ci.fremont.ca.us/addr/addr_proj.cfm within 10 business days. The files will be stored under SP72-0295.

Documents available on Web Site:

X	Notification Letter		Address Table
X	Address Plan (map)		G.I.S. Layer
	AutoCAD Drawing		

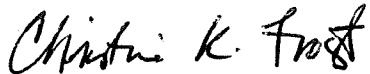
In accordance with Title 15 (Buildings and Construction) Chapter 15.55 (House Numbering) of the Fremont Municipal Code, this letter serves as the notice of the addressing action affecting your property. The new address must be in use within ten (10) days of the receipt of this letter. For information on the size and location of address numbers on a building, please refer to the enclosed information sheet titled “ADDRESSING – Property Owner Responsibilities” and to Chapter 15.50 (Building Security) of the Title 15 (Buildings and Construction).

You will need to update your address records and outside address numbers as soon as possible for the purpose of rapid identification of your property in the event of an emergency. Any occupants and property owner of this parcel should review and update their records that are registered with the City

(such as for building permit and/or business tax purposes). And, by copy of this letter, we are notifying the below-listed agencies and utility companies. However, be aware that some agencies may not update their records until notified by the property owner. Therefore, it is your responsibility to make sure that the appropriate agencies or businesses acknowledge the correct addresses.

If you have any questions concerning this matter, please contact Ron Chan at (phone) 510-494-4832 or (e-mail) rchan@fremont.gov.

Sincerely,



Christine K. Frost
GIS and Addressing Manager

Enclosures (hardcopy/paper): Address Plan - map (1) and Property Owner Responsibilities Information Sheet.

cc: **Paper copy mailed to:**

Alameda County Assessor's Office
Alameda County Fire Department – Dublin (Rose Abbors)
Alameda County Regional Emergency Communication Center - Dublin (Joshua Harris)
Alameda County Registrar of Voters
Alameda County Water District (2)
Alameda County 911 (Coordinator)
Alameda County Main Post Office (Donna Canalin)
Republic Services (Customer Service Manager)
Delivery Detached Unit Post Office (Boanerge Pineda) - zip code area 94539
US Postal Service / AMS (Veronica Chavez)
Fremont Unified School District (Facilities Director)
Lynx Technologies
Pacific Gas & Electric (Jessica Jones / Service Planning Dept.) (2)
AT&T – Engineering
Union Sanitary District (2)

Sent via e-mail:

Alameda County Assessor's Office
AT&T – Database Center / SLIC
Cooperative Strategies/Dolinka Group (Andrew Bishop)
Fremont Community Development - Site Plan Architectural Review (BPSPAR)
Fremont Community Development – Fire & Life Safety (Howard Hancock)
Fremont Plans & Permits
Fremont Environmental Services (Lori Marra)
Fremont GIS (Ruby Wun)

LOCATIONAL MAP

(For reference only – see official addressing map for actual/correct address)

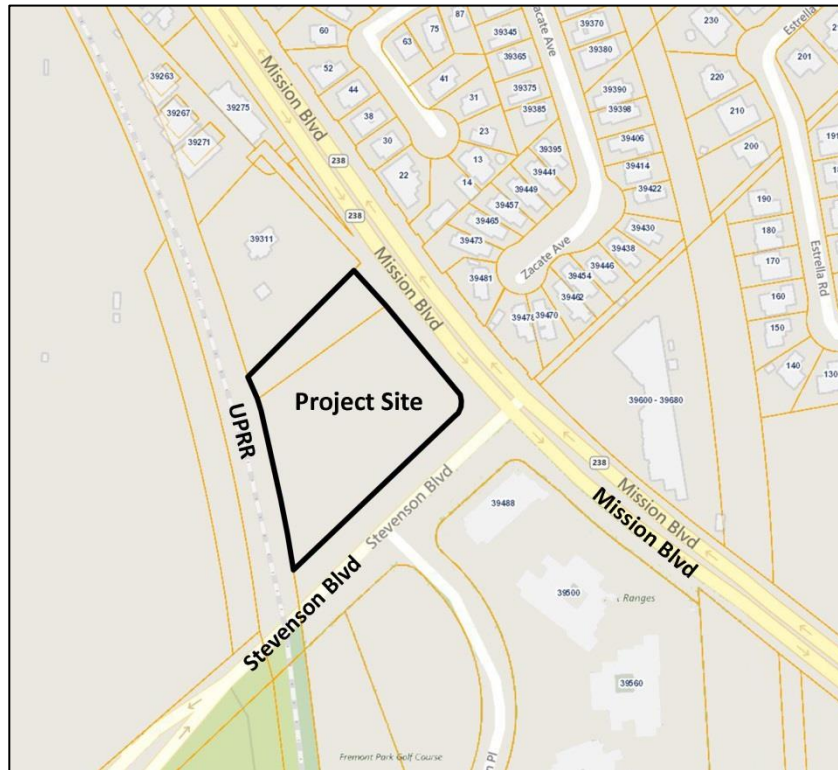


TABLE A:

Record	Address No.	Street Name	Unit No.	Zip Code	Subdivision No.	Lot No	Building	Address Type	Address Status
--------	-------------	-------------	----------	----------	-----------------	--------	----------	--------------	----------------

Capstone Common

1	39473	Capstone Cmn		94539	TR 8229	Parcel A		Common Area RES COMMON	New
2	39474	Capstone Cmn		94539	TR 8229	Lot 6	Bldg 6	Building & Lot RES BLDG	New
3	39478	Capstone Cmn		94539	TR 8229	Condo Lot 27	Bldg 6	Condo Unit RES C	New
4	39482	Capstone Cmn		94539	TR 8229	Condo Lot 28	Bldg 6	Condo Unit RES C	New
5	39486	Capstone Cmn		94539	TR 8229	Condo Lot 29	Bldg 6	Condo Unit RES C	New
6	39490	Capstone Cmn		94539	TR 8229	Condo Lot 30	Bldg 6	Condo Unit RES C	New

Record	Address No.	Street Name	Unit No.	Zip Code	Subdivision No.	Lot No	Building	Address Type	Address Status
--------	-------------	-------------	----------	----------	-----------------	--------	----------	--------------	----------------

Finial Common

7	39431	Finial Cmn		94539	TR 8229	Lot 10	Bldg 10	Building & Lot RES BLDG	New
8	39435	Finial Cmn		94539	TR 8229	Condo Lot 53	Bldg 10	Condo Unit RES C	New
9	39439	Finial Cmn		94539	TR 8229	Condo Lot 52	Bldg 10	Condo Unit RES C	New
10	39443	Finial Cmn		94539	TR 8229	Condo Lot 51	Bldg 10	Condo Unit RES C	New
11	39447	Finial Cmn		94539	TR 8229	Condo Lot 50	Bldg 10	Condo Unit RES C	New
12	39451	Finial Cmn		94539	TR 8229	Condo Lot 49	Bldg 10	Condo Unit RES C	New
13	39455	Finial Cmn		94539	TR 8229	Condo Lot 48	Bldg 10	Condo Unit RES C	New

Loft Terrace

14	39471	Loft Ter		94539	TR 8229	Condo Lot 41	Bldg 8	Condo Unit RES C	New
15	39475	Loft Ter		94539	TR 8229	Condo Lot 40	Bldg 8	Condo Unit RES C	New
16	39479	Loft Ter		94539	TR 8229	Condo Lot 39	Bldg 8	Condo Unit RES C	New
17	39483	Loft Ter		94539	TR 8229	Condo Lot 38	Bldg 8	Condo Unit RES C	New
18	39487	Loft Ter		94539	TR 8229	Condo Lot 37	Bldg 8	Condo Unit RES C	New
19	39491	Loft Ter		94539	TR 8229	Condo Lot 36	Bldg 8	Condo Unit RES C	New
20	39495	Loft Ter		94539	TR 8229	Lot 8	Bldg 8	Building & Lot RES BLDG	New
21	39472	Loft Ter		94539	TR 8229	Condo Lot 42	Bldg 9	Condo Unit RES C	New
22	39476	Loft Ter		94539	TR 8229	Condo Lot 43	Bldg 9	Condo Unit RES C	New
23	39480	Loft Ter		94539	TR 8229	Condo Lot 44	Bldg 9	Condo Unit RES C	New
24	39484	Loft Ter		94539	TR 8229	Condo Lot 45	Bldg 9	Condo Unit RES C	New
25	39488	Loft Ter		94539	TR 8229	Condo Lot 46	Bldg 9	Condo Unit RES C	New
26	39492	Loft Ter		94539	TR 8229	Condo Lot 47	Bldg 9	Condo Unit RES C	New
27	39496	Loft Ter		94539	TR 8229	Lot 9	Bldg 9	Building & Lot RES BLDG	New

Record	Address No.	Street Name	Unit No.	Zip Code	Subdivision No.	Lot No	Building	Address Type	Address Status
--------	-------------	-------------	----------	----------	-----------------	--------	----------	--------------	----------------

Mission Boulevard

28	39393	Mission Blvd		94539	TR 8229	Parcel B		Common Area RES COMMON	Relocated Existing
29	39401	Mission Blvd		94539	TR 8229	Lot 1	Bldg 1	Building & Lot RES BLDG	New
30	39405	Mission Blvd		94539	TR 8229	Condo Lot 1	Bldg 1	Condo Unit RES C	New
31	39409	Mission Blvd		94539	TR 8229	Condo Lot 2	Bldg 1	Condo Unit RES C	New
32	39413	Mission Blvd		94539	TR 8229	Condo Lot 3	Bldg 1	Condo Unit RES C	New
33	39417	Mission Blvd		94539	TR 8229	Condo Lot 4	Bldg 1	Condo Unit RES C	New
34	39421	Mission Blvd		94539	TR 8229	Condo Lot 5	Bldg 1	Condo Unit RES C	New
35	39425	Mission Blvd		94539	TR 8229	Condo Lot 6	Bldg 1	Condo Unit RES C	New
36	39429	Mission Blvd		94539	TR 8229	Condo Lot 7	Bldg 1	Condo Unit RES C	New
37	39433	Mission Blvd		94539	TR 8229	Lot 11	Bldg 11	Building & Lot RES BLDG	New
38	39437	Mission Blvd		94539	TR 8229	Condo Lot 54	Bldg 11	Condo Unit RES C	New
39	39439	Mission Blvd		94539	TR 8229	Parcel C		Common Area RES COMMON	Relocated Existing
40	39441	Mission Blvd		94539	TR 8229	Condo Lot 55	Bldg 11	Condo Unit RES C	New
41	39445	Mission Blvd		94539	TR 8229	Condo Lot 56	Bldg 11	Condo Unit RES C	New
42	39449	Mission Blvd		94539	TR 8229	Condo Lot 57	Bldg 11	Condo Unit RES C	New
43	39453	Mission Blvd		94539	TR 8229	Condo Lot 58	Bldg 11	Condo Unit RES C	New
44	39457	Mission Blvd		94539	TR 8229	Condo Lot 59	Bldg 11	Condo Unit RES C	New
45	39461	Mission Blvd		94539	TR 8229	Condo Lot 60	Bldg 11	Condo Unit RES C	New

Spire Common

46	203	Spire Cmn		94539	TR 8229	Condo Lot 35	Bldg 7	Condo Unit RES C	New
47	207	Spire Cmn		94539	TR 8229	Condo Lot 34	Bldg 7	Condo Unit RES C	New
48	211	Spire Cmn		94539	TR 8229	Condo Lot 33	Bldg 7	Condo Unit RES C	New
49	215	Spire Cmn		94539	TR 8229	Condo Lot 32	Bldg 7	Condo Unit RES C	New
50	219	Spire Cmn		94539	TR 8229	Condo Lot 31	Bldg 7	Condo Unit RES C	New

Record	Address No.	Street Name	Unit No.	Zip Code	Subdivision No.	Lot No	Building	Address Type	Address Status
51	223	Spire Cmn		94539	TR 8229	Lot 7	Bldg 7	Building & Lot RES BLDG	New

Stevenson Boulevard

52	101	Stevenson Blvd		94539	TR 8229	Condo Lot 61	Bldg 12	Condo Unit RES C	New
53	105	Stevenson Blvd		94539	TR 8229	Condo Lot 62	Bldg 12	Condo Unit RES C	New
54	109	Stevenson Blvd		94539	TR 8229	Condo Lot 63	Bldg 12	Condo Unit RES C	New
55	113	Stevenson Blvd		94539	TR 8229	Condo Lot 64	Bldg 12	Condo Unit RES C	New
56	117	Stevenson Blvd		94539	TR 8229	Lot 12	Bldg 12	Building & Lot RES BLDG	New
57	121	Stevenson Blvd		94539	TR 8229	Condo Lot 65	Bldg 13	Condo Unit RES C	New
58	125	Stevenson Blvd		94539	TR 8229	Condo Lot 66	Bldg 13	Condo Unit RES C	New
59	129	Stevenson Blvd		94539	TR 8229	Condo Lot 67	Bldg 13	Condo Unit RES C	New
60	133	Stevenson Blvd		94539	TR 8229	Condo Lot 68	Bldg 13	Condo Unit RES C	New
61	137	Stevenson Blvd		94539	TR 8229	Condo Lot 69	Bldg 13	Condo Unit RES C	New
62	141	Stevenson Blvd		94539	TR 8229	Condo Lot 70	Bldg 13	Condo Unit RES C	New
63	145	Stevenson Blvd		94539	TR 8229	Lot 13	Bldg 13	Building & Lot RES BLDG	New
64	149	Stevenson Blvd		94539	TR 8229	Condo Lot 71	Bldg 14	Condo Unit RES C	New
65	153	Stevenson Blvd		94539	TR 8229	Condo Lot 72	Bldg 14	Condo Unit RES C	New
66	157	Stevenson Blvd		94539	TR 8229	Condo Lot 73	Bldg 14	Condo Unit RES C	New
67	161	Stevenson Blvd		94539	TR 8229	Condo Lot 74	Bldg 14	Condo Unit RES C	New
68	165	Stevenson Blvd		94539	TR 8229	Condo Lot 75	Bldg 14	Condo Unit RES C	New
69	169	Stevenson Blvd		94539	TR 8229	Condo Lot 76	Bldg 14	Condo Unit RES C	New
70	173	Stevenson Blvd		94539	TR 8229	Condo Lot 77	Bldg 14	Condo Unit RES C	New
71	177	Stevenson Blvd		94539	TR 8229	Lot 14	Bldg 14	Building & Lot RES BLDG	New
72	177	Stevenson Blvd	IRR-1	94539	TR 8229	Lot 14		Irrigation Meter MISC UTIL	New

Record	Address No.	Street Name	Unit No.	Zip Code	Subdivision No.	Lot No	Building	Address Type	Address Status
--------	-------------	-------------	----------	----------	-----------------	--------	----------	--------------	----------------

Zenith Common

73	51	Zenith Cmn		94539	TR 8229	Condo Lot 8	Bldg 2	Condo Unit RES C	New
74	55	Zenith Cmn		94539	TR 8229	Condo Lot 9	Bldg 2	Condo Unit RES C	New
75	59	Zenith Cmn		94539	TR 8229	Condo Lot 10	Bldg 2	Condo Unit RES C	New
76	63	Zenith Cmn		94539	TR 8229	Condo Lot 11	Bldg 2	Condo Unit RES C	New
77	67	Zenith Cmn		94539	TR 8229	Condo Lot 12	Bldg 2	Condo Unit RES C	New
78	71	Zenith Cmn		94539	TR 8229	Lot 2	Bldg 2	Building & Lot RES BLDG	New
79	75	Zenith Cmn		94539	TR 8229	Lot 3	Bldg 3	Building & Lot RES BLDG	New
80	79	Zenith Cmn		94539	TR 8229	Condo Lot 13	Bldg 3	Condo Unit RES C	New
81	83	Zenith Cmn		94539	TR 8229	Condo Lot 14	Bldg 3	Condo Unit RES C	New
82	87	Zenith Cmn		94539	TR 8229	Condo Lot 15	Bldg 3	Condo Unit RES C	New
83	91	Zenith Cmn		94539	TR 8229	Condo Lot 16	Bldg 3	Condo Unit RES C	New
84	52	Zenith Cmn		94539	TR 8229	Condo Lot 17	Bldg 4	Condo Unit RES C	New
85	56	Zenith Cmn		94539	TR 8229	Condo Lot 18	Bldg 4	Condo Unit RES C	New
86	60	Zenith Cmn		94539	TR 8229	Condo Lot 19	Bldg 4	Condo Unit RES C	New
87	64	Zenith Cmn		94539	TR 8229	Condo Lot 20	Bldg 4	Condo Unit RES C	New
88	68	Zenith Cmn		94539	TR 8229	Condo Lot 21	Bldg 4	Condo Unit RES C	New
89	72	Zenith Cmn		94539	TR 8229	Lot 4	Bldg 4	Building & Lot RES BLDG	New
90	76	Zenith Cmn		94539	TR 8229	Lot 5	Bldg 5	Building & Lot RES BLDG	New
91	80	Zenith Cmn		94539	TR 8229	Condo Lot 22	Bldg 5	Condo Unit RES C	New
92	84	Zenith Cmn		94539	TR 8229	Condo Lot 23	Bldg 5	Condo Unit RES C	New
93	88	Zenith Cmn		94539	TR 8229	Condo Lot 24	Bldg 5	Condo Unit RES C	New
94	92	Zenith Cmn		94539	TR 8229	Condo Lot 25	Bldg 5	Condo Unit RES C	New
95	96	Zenith Cmn		94539	TR 8229	Condo Lot 26	Bldg 5	Condo Unit RES C	New