



**Project Site**



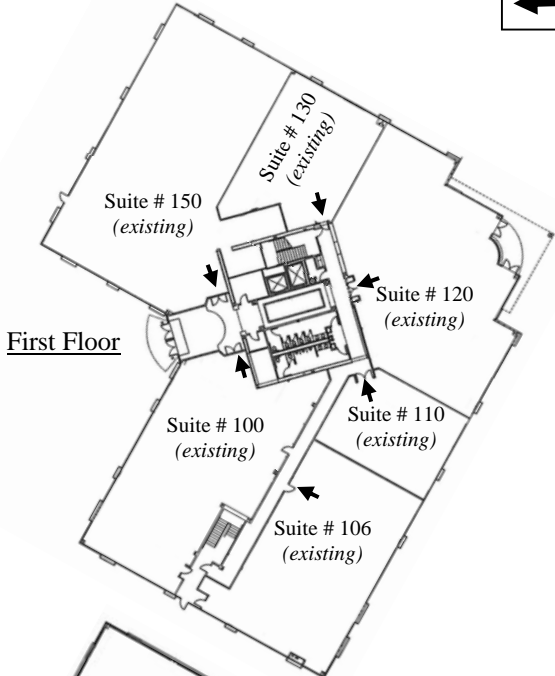
**LOCATIONAL MAP**

**ADDRESS CHRONOLOGY**

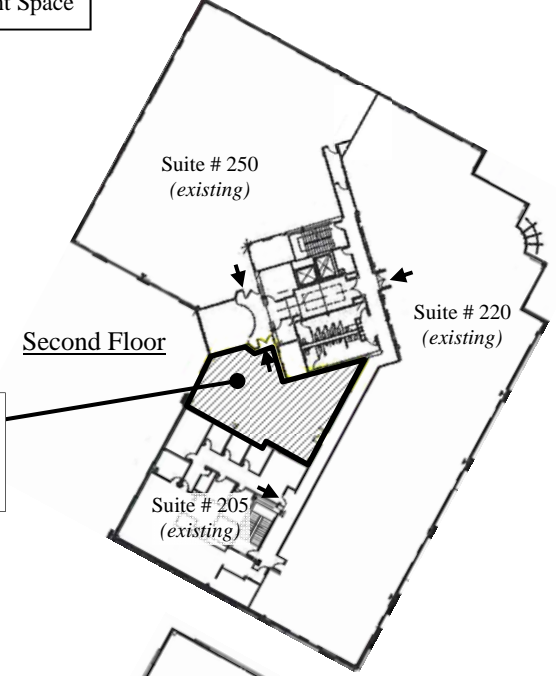
- Initial addressing at time of construction: 1999
- First Floor:
  - Issued new Suites # 106 and # 130: 7/17/09 (RW)
- Second Floor:
  - Issued new Suite # 201 (RW)
- Third Floor:
  - Issued new Suite # 350: 5/7/03 (ME)
  - Rescinded existing Suite # 300; verified/reactivated existing Suite # 325; issued new Suite # 335: 10/1/09 (RW)
  - Issued new Suite # 315: 5/25/12 (RC)

**LEGEND:**

- New Tenant Space
- Entrance to Tenant Space

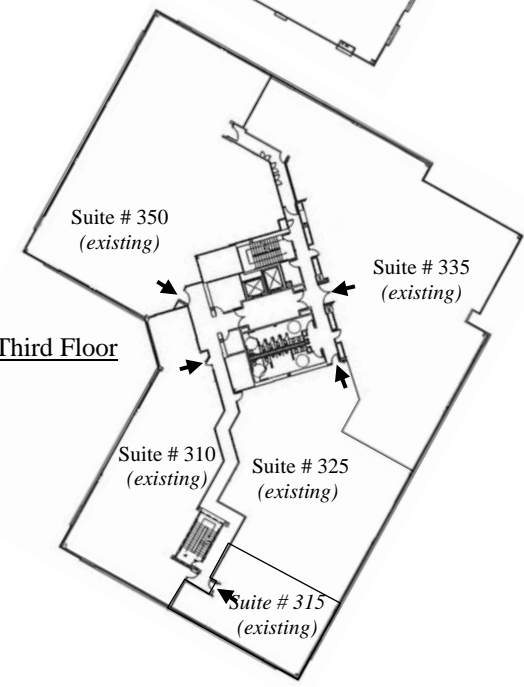


First Floor

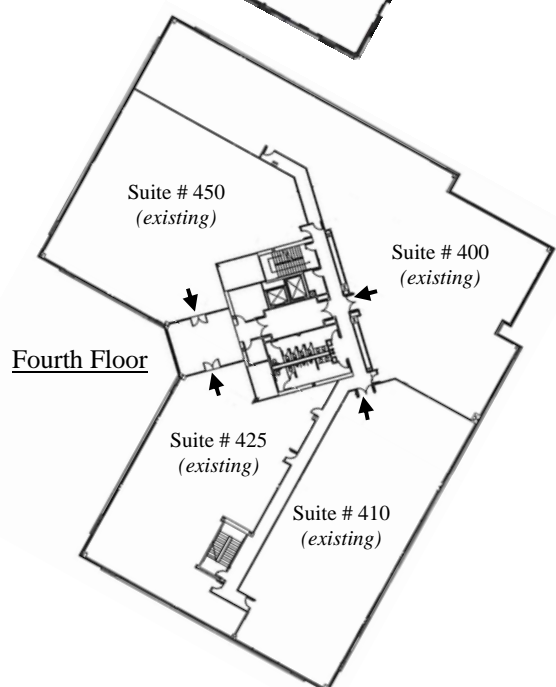


Second Floor

**NEW**  
Suite # 201  
*(new tenant space)*



Third Floor



Fourth Floor

*NOTE: Base address for all suites is 39141 Civic Center Drive.*



**FOR ADDRESSING PURPOSES ONLY**

SP72-0228 5/12/2015 (RW)