

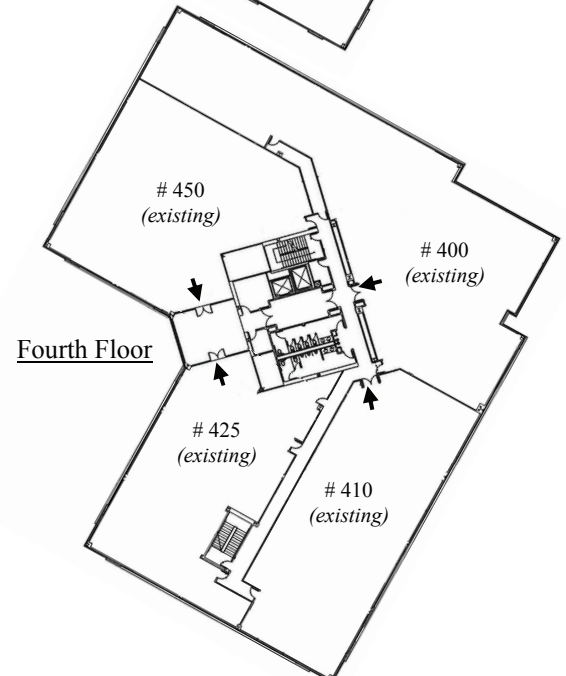
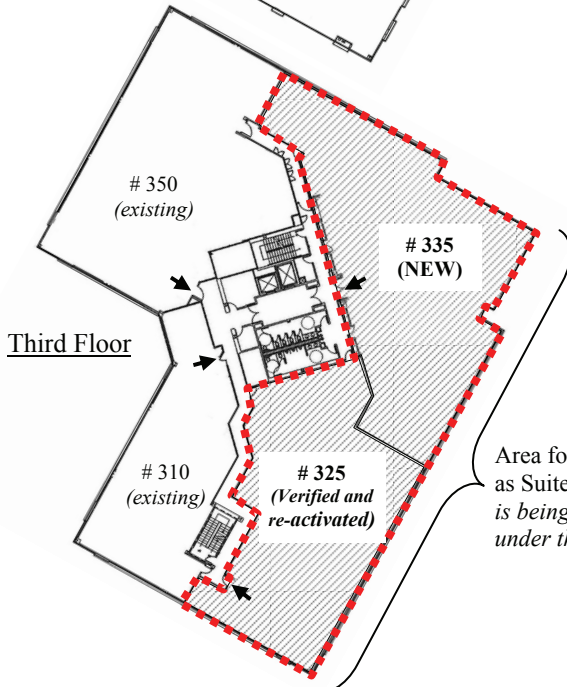
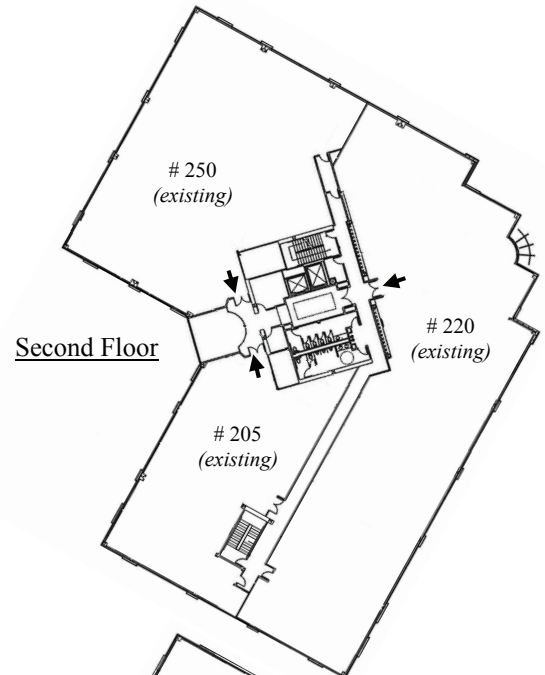
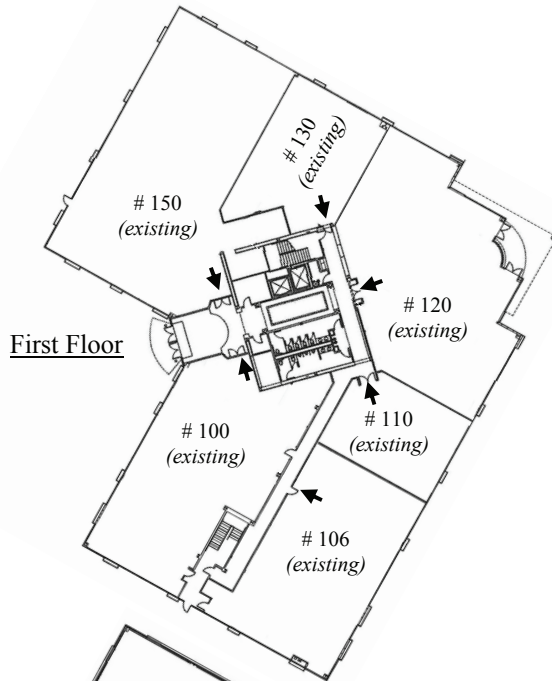
ADDRESS CHRONOLOGY

- Initial addressing at time of construction (1999)
- Third Floor: Issued new Suite # 350 (5/7/03 - ME)
- First Floor: Issued new Suites # 106 and # 130 (7/17/09 - RW)
- Third Floor: Rescinded existing Suite # 300; verified/reactivated existing Suite # 325; issued new Suite # 335 (10/1/09 - RW)

LEGEND:

- New Tenant Space
- Entrance to Tenant Space
- Extents of tenant improvement (formerly known as Suite # 300)

LOCATIONAL MAP



Area formerly known as Suite # 300 (which is being rescinded under this action).