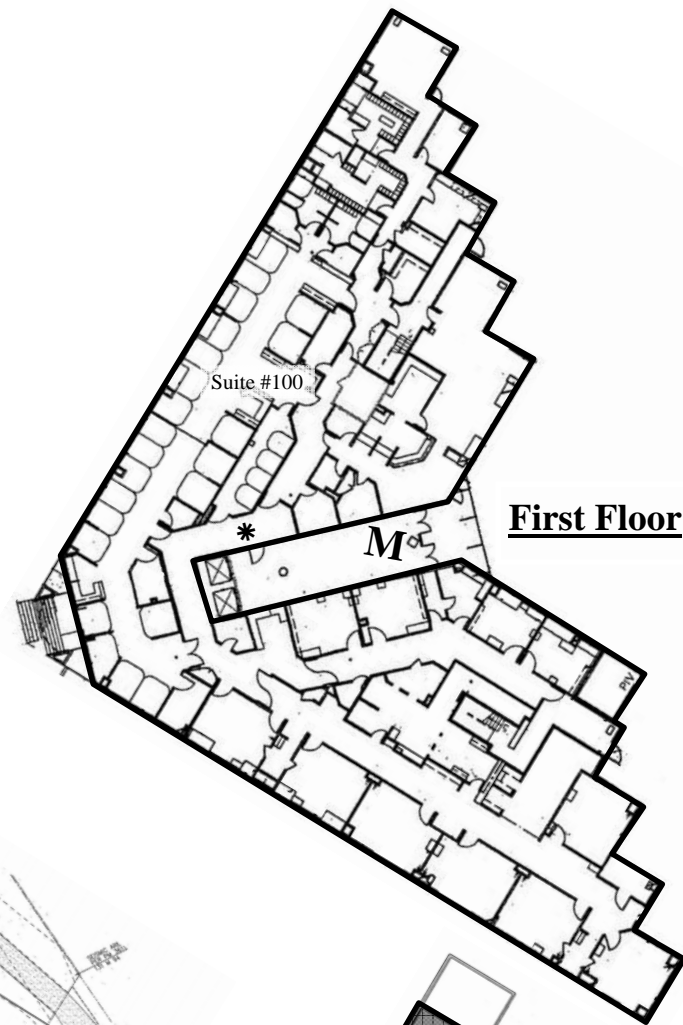
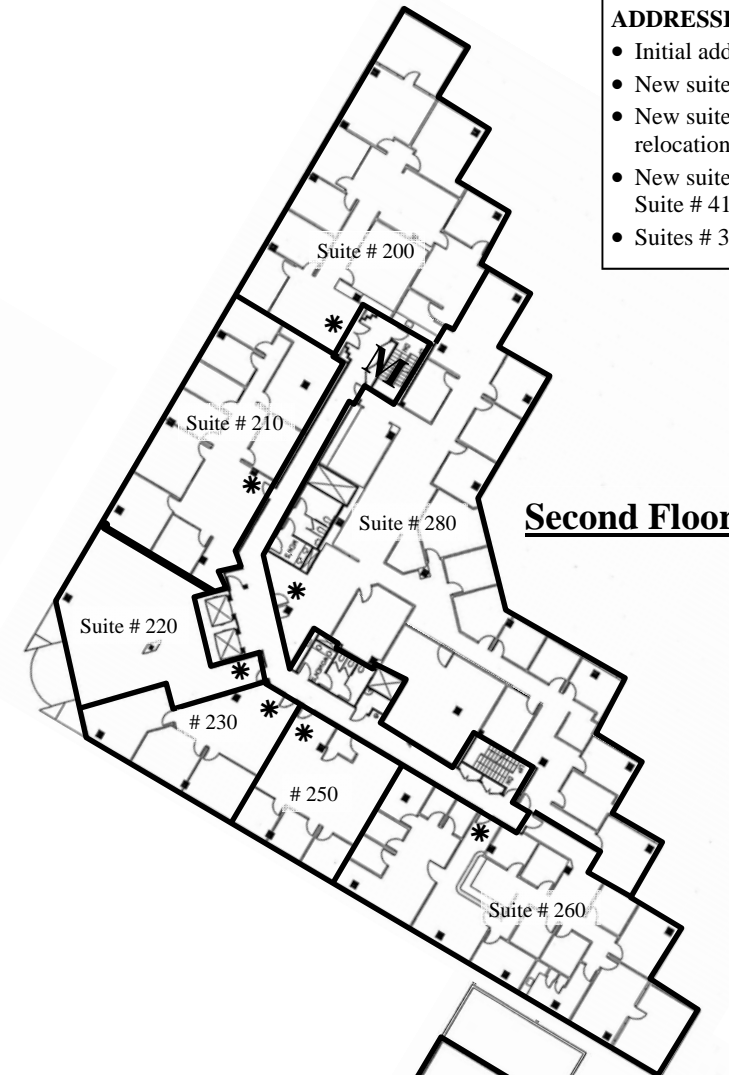


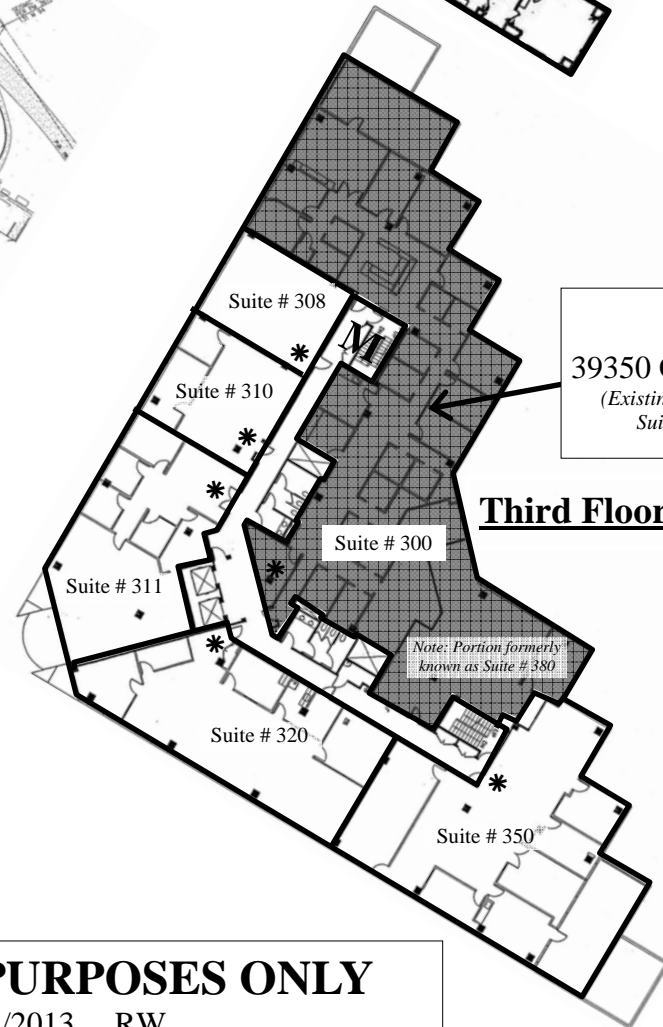
LOCATIONAL MAP



First Floor

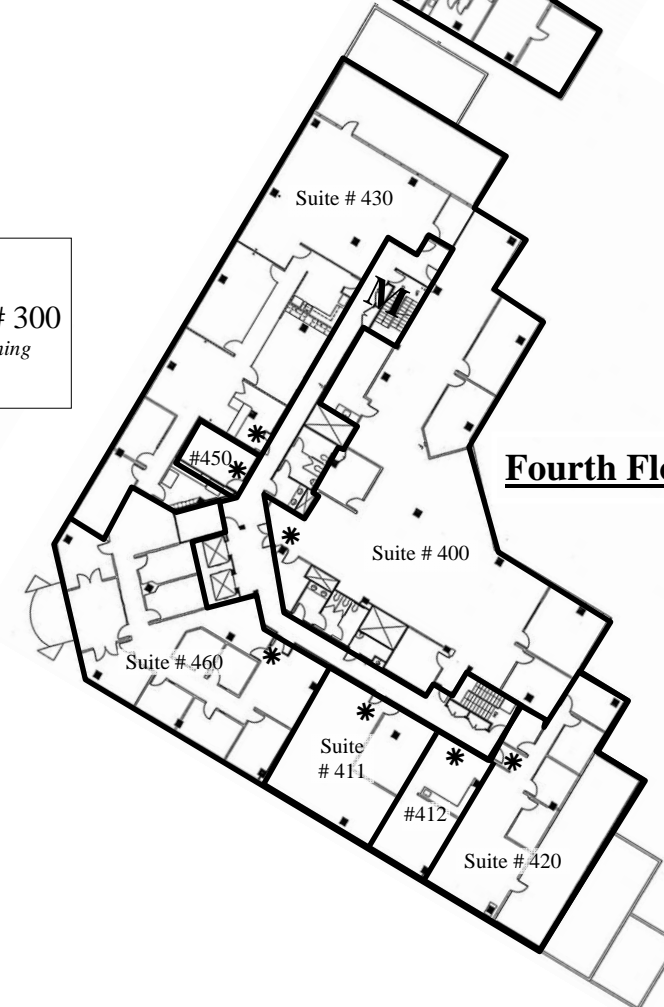


Second Floor



Third Floor

Expanded
 39350 Civic Center Dr Suite # 300
 (Existing Suite # 300 expanded by combining
 Suite # 300 with former Suite # 380.)



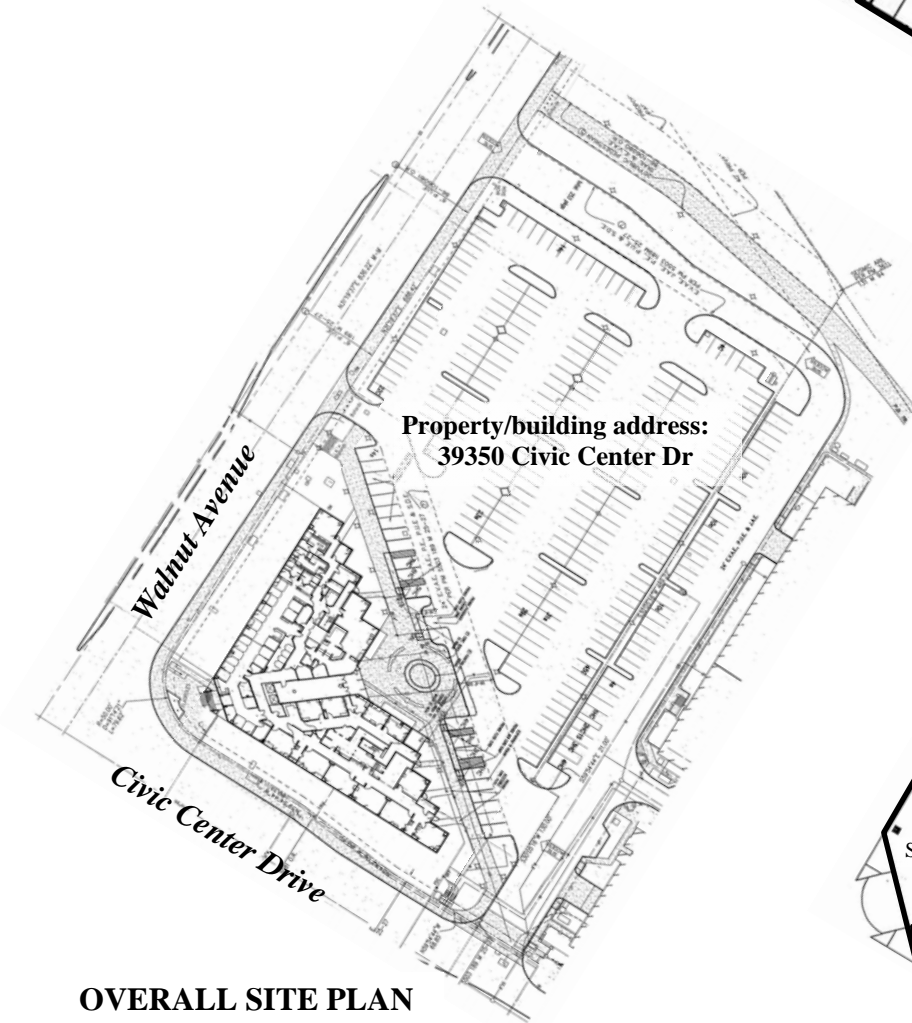
Fourth Floor

ADDRESSING CHRONOLOGY:

- Initial addressing at time of construction: 10/17/1985
- New suite number assigned (Suite #320): 4/16/2003
- New suite number assigned (Suite #100 and Suite #308). Addressing action includes relocation of existing Suite # 310 to accommodate new Suite # 308: 7/2/2009
- New suite number assigned (Suite #412). Addressing includes relocation of existing Suite # 411 to accommodate new Suite #412: 10/27/2011 (RC)
- Suites # 300 and # 380 combined to create expanded Suite # 300: 11/25/2013 (RW)

LEGEND:

- Tenant Space Outline
- #123 Existing Suite Number
- Area of change
- * Primary door to Tenant Space
- M Main access to floor



OVERALL SITE PLAN

Note: Suite numbers shall be in sequential pattern. It is recognized that three suite numbers (i.e. Suites 411, 412, 420) on the Fourth Floor are out of sequence. When these suites are vacated, they will need to be reassigned to new suite numbers.



FOR ADDRESSING PURPOSES ONLY

SP72-0095 11/25/2013 RW