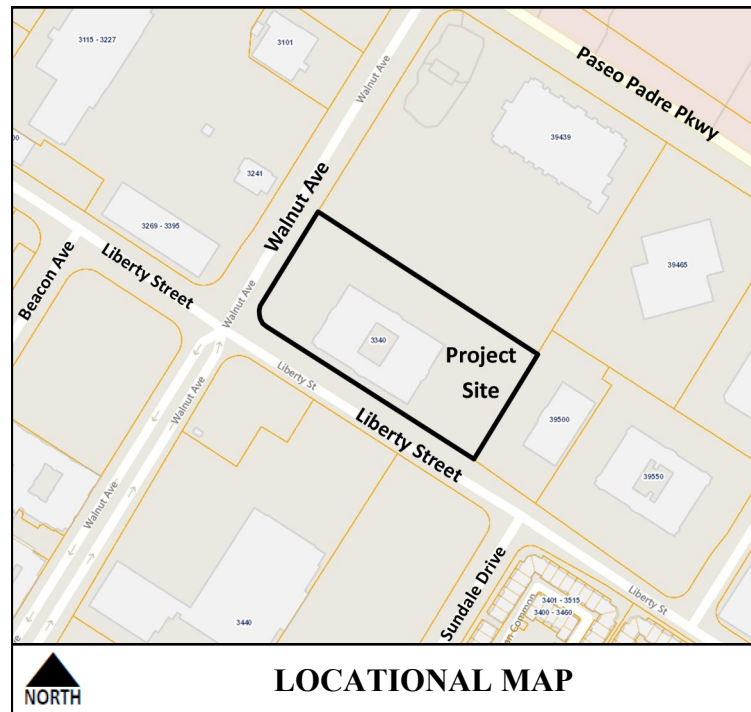


**LEGEND**

- Address boundary between 3340 Walnut Ave and 39420 Liberty St
- Main entrance (building or tenant space)
- Outline of tenant space
- Areas of change (new/modified tenant spaces)
- Suite Number
- New Suite Number

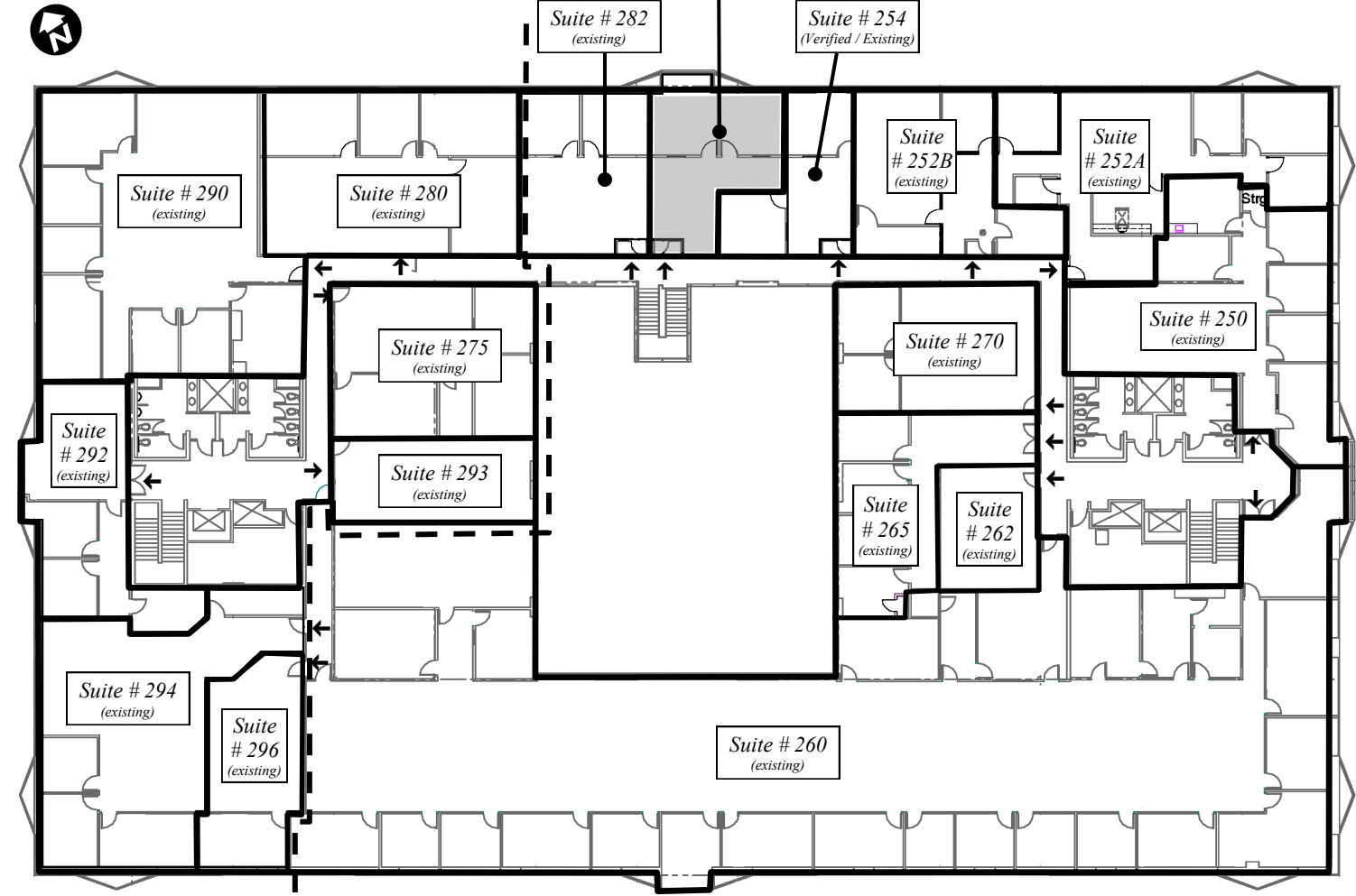


**FIRST FLOOR**

← 3340 Walnut Ave | 39420 Liberty St →

**ADDRESS CHRONOLOGY**

- Initial addressing of building: 10/25/1985
- Issued Suite # 164 for 39420 Liberty Street: 6/23/1997 (ME)
- Verified 3340 Walnut Avenue Suite # 115: 5/1/2009 (RW)
- Verified address of ten suites - 1/7/2010 (RW)
  - 3340 Walnut Avenue Suites # 113, # 114, and # 115;
  - 39420 Liberty Street Suites # 140, # 150, # 162, # 163, # 164, # 262 and # 265.
- Issued Suite # 157 for 39420 Liberty Street: 4/14/2011 (RW)
- Addressing action: 7/12/2012 (RW)
  - Issued: 39420 Liberty Street Suite # 258; and, 3340 Walnut Avenue Suites # 292 and # 293
  - Verified: 3340 Walnut Avenue Suites # 280 and # 290;
  - Rescinded: Suite # 255 of 39420 Liberty Street
  - Adjust address boundary between 3340 Walnut Ave and 39420 Liberty St
- Addressing action: 4/30/2012 (RW)
  - Issued: 3340 Walnut Ave: Suite # 112, # 292, # 294 and # 296 (relocation of)
  - Issued: 39420 Liberty St: Suite # 139, # 145, # 252A and # 252B
- Verified 39420 Liberty Street Suite # 254 - 3/10/2017 (RW)
- Addressing action: 3/10/2017 (RW)
  - Issued: 39420 Liberty Street Suite # 258
  - Rescinded: Suite # 255 of 39420 Liberty Street



← 3340 Walnut Ave | 39420 Liberty St →

**SECOND FLOOR**