

FOR ADDRESSING PURPOSES ONLY

SP66-0218 4/23/2008 RC

LOWRY ROAD

ISSUE STATUS

Δ	DATE	DESCRIPTION	REV
1	2-7-08	LEASE/ESMT./LEGAL	TFS
2	3-18-08	UTIL. ESMT./LEGAL	TFS
3	3-19-08	UTIL. ESMT./LEGAL	TFS

TIMOTHY SCHAD, L.S.
 10899 ROUND VALLEY RD.
 GRASS VALLEY, CA. 95949
 PHONE: (530) 271-7477
 FAX: (530) 271-7377



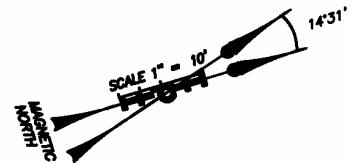
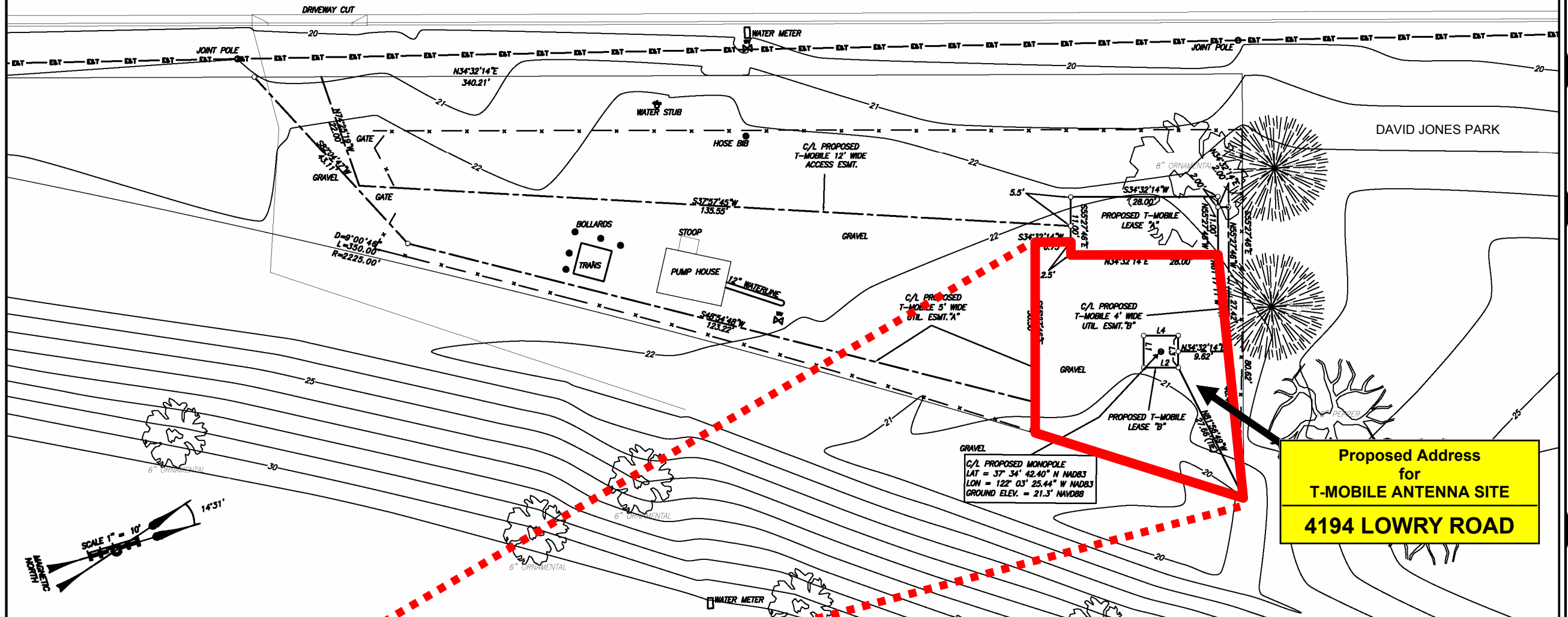
OMNIPONT
 DBA
T-Mobile
 1855 GATEWAY BLVD. 9TH FLOOR
 CONCORD, CA. 94520

LOWRY ROAD
ALAMEDA PUMP STATION
 BA12042-A
LOWRY ROAD @ LARK WAY
 FREMONT, CA 94538
 ALAMEDA COUNTY
 APN: 543-0221-001-09

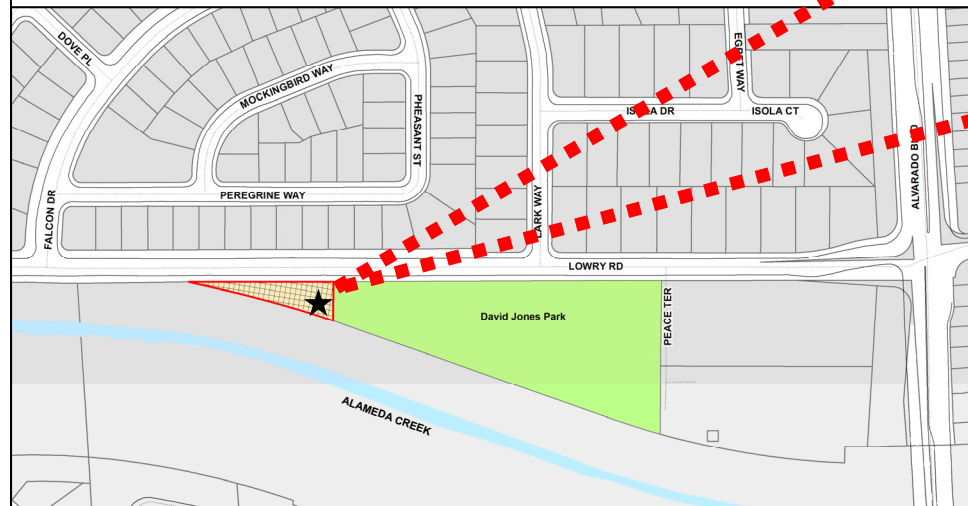
SHEET TITLE:

SITE SURVEY

LS-1



LOCATIONAL MAP



LINE TABLE		
LINE	LENGTH	BEARING
L1	6.08'	S55°27'46\"
L2	6.58'	N34°32'14\"
L3	6.08'	N55°27'46\"
L4	6.58'	S34°32'14\"