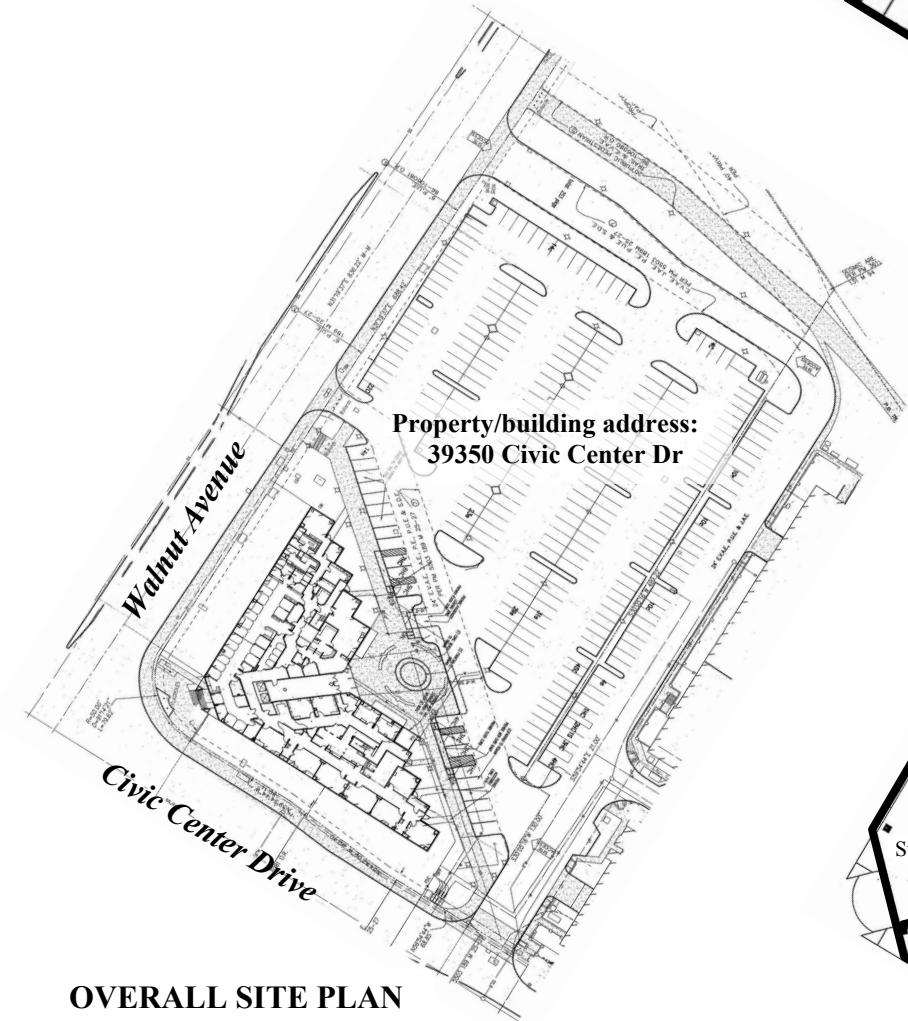


- ADDRESSING CHRONOLOGY:**
- 10/17/1985: Initial addressing at time of construction
 - 4/16/2003: New suite number assigned (Suite #320)
 - 7/2/2009: New suite number assigned (Suite #100 and Suite #308). Addressing action includes relocation of existing Suite # 310 to accommodate new Suite # 308.
 - 10/27/2011: New suite number assigned (Suite #412). Addressing includes relocation of existing Suite # 411 to accommodate new Suite #412.

LEGEND:

- Tenant Space Outline
- #123 Existing Suite Number
- New Suite Number
- Primary door to Tenant Space
- Main access to floor



Note: Suite numbers shall be in sequential pattern. It is recognized that three suite numbers (i.e. Suites 411, 412, 420) on the Fourth Floor are out of sequence. When these suites are vacated, they will need to be reassigned to new suite numbers.



FOR ADDRESSING PURPOSES ONLY

SP72-0095 10/27/2011 RC

Existing Suite #411:
new location to accommodate
new tenant space.

New Tenant Space:
Suite **#412**