

Date: March 15, 2021

To: Jon White & Sandra Heredia
Allied 38631 Fremont L.P.
40849 Fremont Blvd
Fremont, CA 94538
AND
Cole Gaumnitz, PE
BKF
1730 N First St, Ste 600
San Jose, CA 95112

Requestor: JHUAN | JWILL
Discretionary Rev: PLN2019-00358
Permitting File#: BLD2019-06321
SP#: 66-0019
APN#: 501 090002000
Zip Code: 94536
Fire ESZ | Box/S-Dist: 01 - 458 | 1-6 / 88C3
Address For: Residential Apartments

Re: Addresses for City Center Apartments – 38631 Fremont Blvd

To Whom It May Concern:

In response to your request for addresses needed for new residential apartments, a total of sixty-seven (67) new addresses have been assigned. And, as part of this addressing action, one (1) existing address (i.e., 38651 Fremont Blvd) has been rescinded. For a full inventory and description of the addresses, please refer to Table “A” for a list of authorized addresses. Table “B” contains a listing of the rescinded address. The enclosed Addressing Plan illustrates the proper use and placement of the new addresses.

CONDITION OF APPROVAL: Prior to final inspection, Wayfinding signage and/or floor plans shall be posted on each residential floor to clearly indicate the unit numbers and flow direction. Appropriate signage and/or floor plan shall be placed near the elevators and/or stairs as well as midpoint of hallway. Subject to the approval of the Fremont Fire Marshal.

Electronic copies of this letter and documentation will be posted to the City’s web site at http://gis.ci.fremont.ca.us/addr/addr_proj.cfm within 10 business days. The files will be stored under SP66-0019.

Documents available on Web Site:

X	Notification Letter		Address Table
X	Address Plan (map)		G.I.S. Layer
	AutoCAD Drawing		

In accordance with Title 15 (Buildings and Construction) Chapter 15.55 (House Numbering) of the Fremont Municipal Code, this letter serves as the notice of the addressing action affecting your property. The new address must be in use within ten (10) days of the receipt of this letter. For information on the size and location of address numbers on a building, please refer to the enclosed information sheet titled

“ADDRESSING – Property Owner Responsibilities” and to Chapter 15.50 (Building Security) of the Title 15 (Buildings and Construction).

You will need to update your address records and outside address numbers as soon as possible for the purpose of rapid identification of your property in the event of an emergency. Any occupants and property owner of this parcel should review and update their records that are registered with the City (such as for building permit and/or business tax purposes). And, by copy of this letter, we are notifying the below-listed agencies and utility companies. However, be aware that some agencies may not update their records until notified by the property owner. Therefore, it is your responsibility to make sure that the appropriate agencies or businesses acknowledge the correct addresses.

If you have any questions concerning this matter, please contact Ron Chan at (phone) 510-494-4832 or (e-mail) rchan@fremont.gov.

Sincerely,



John L. Leon
GIS and Addressing Manager

Enclosures (hardcopy/paper): Address Plan - map (6) and Property Owner Responsibilities Information Sheet.

cc: **Sent via e-mail:**

Alameda County Registrar of Voters
Alameda County Regional Emergency Communication Center - Dublin
Alameda County Water District
Alameda County 911 (Coordinator)
Alameda County Main Post Office (Address Mgmt. Systems Manager)
AT&T – Database Center / SLIC
Cooperative Strategies/Dolinka Group
Fremont Unified School District (Facilities Director)
Fremont Main Post Office (Station Manager) – zip code area 94536 / 94537 / 94555
Republic Services
US Postal Service / AMS
Lynx Technologies
Pacific Gas & Electric (Service Planning Dept.)
AT&T – Engineering
Union Sanitary District
Fremont Community Development – Building & Safety
Fremont Community Development – Fire & Life Safety
Fremont Fire – Prevention
Fremont Plans & Permits
Fremont Environmental Services

(For reference only – see official addressing map for actual/correct address)

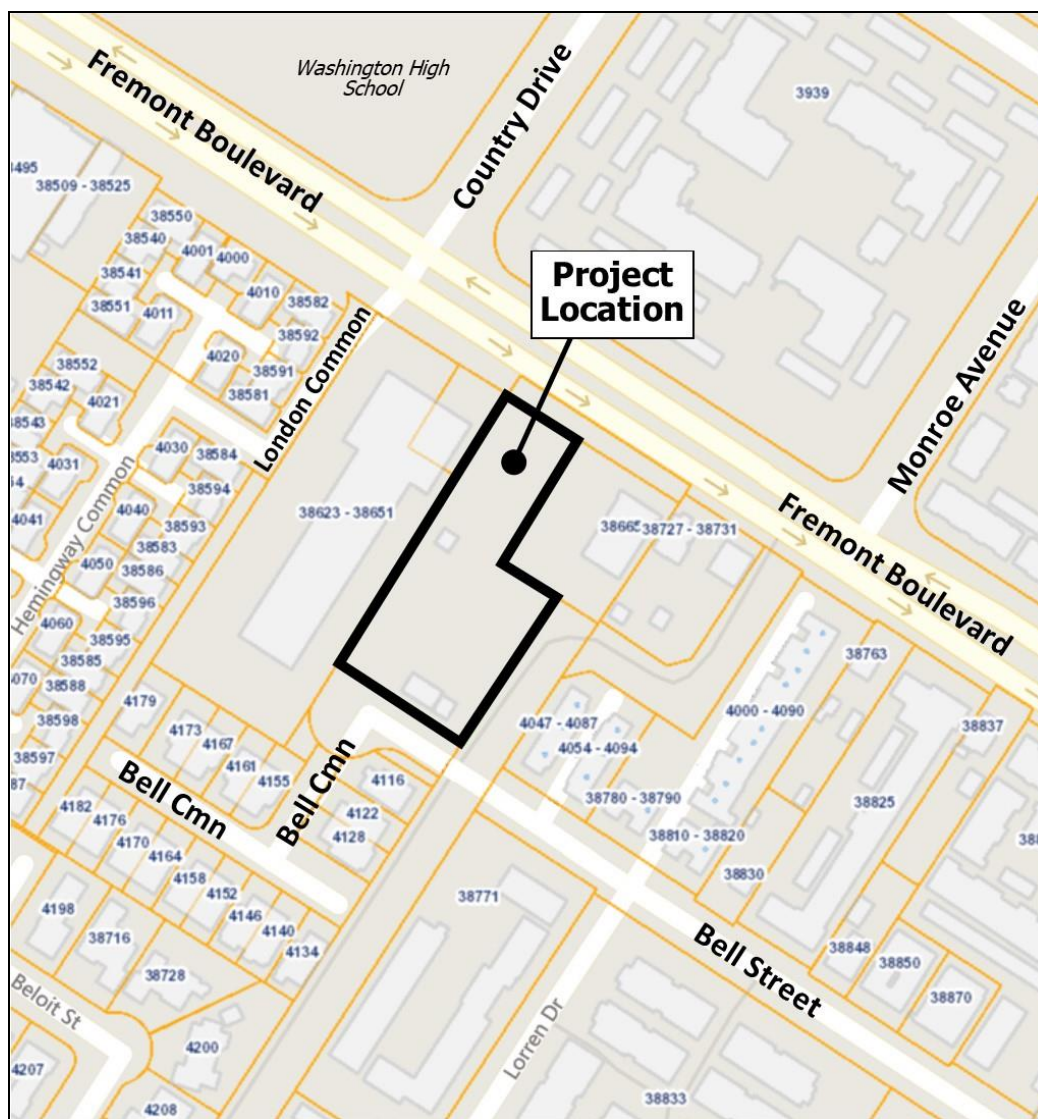


TABLE A: Authorized Addresses

Record	Address No	Street	Unit No	Zip Code	Bldg	Floor	Subdivision No.	Land Lot	Condo Lot	Address Type	Status
1	38631	Fremont Blvd		94536			PM 2936	Lot 2		Parcel Building	Verified Existing
2	38631	Fremont Blvd	Ste 1100	94536		Floor 1	PM 2936	Lot 2		Office	Assigned
3	38631	Fremont Blvd	Ste 2100	94536		Floor 1	PM 2936	Lot 2		Office	Assigned
4	38631	Fremont Blvd	Ste 2102	94536		Floor 1	PM 2936	Lot 2		Office	Assigned
5	38631	Fremont Blvd	Ste 2104	94536		Floor 1	PM 2936	Lot 2		Office	Assigned
6	38631	Fremont Blvd	Ste 3100	94536		Floor 1	PM 2936	Lot 2		Office	Assigned
7	38631	Fremont Blvd	Irr-1	94536		Floor 1	PM 2936	Lot 2		Utility	Assigned
8	38631	Fremont Blvd	Elec Rm-1	94536		Floor 1	PM 2936	Lot 2		Utility	Assigned
9	38631	Fremont Blvd	Apt 4130	94536		Floor 1	PM 2936	Lot 2		Space	Assigned
10	38631	Fremont Blvd	Apt 4132	94536		Floor 1	PM 2936	Lot 2		Space	Assigned
11	38631	Fremont Blvd	Apt 4133	94536		Floor 1	PM 2936	Lot 2		Space	Assigned
12	38631	Fremont Blvd	Apt 4134	94536		Floor 1	PM 2936	Lot 2		Space	Assigned
13	38631	Fremont Blvd	Apt 1200	94536		Floor 2	PM 2936	Lot 2		Space	Assigned
14	38631	Fremont Blvd	Apt 1201	94536		Floor 2	PM 2936	Lot 2		Space	Assigned
15	38631	Fremont Blvd	Apt 1202	94536		Floor 2	PM 2936	Lot 2		Space	Assigned
16	38631	Fremont Blvd	Apt 1203	94536		Floor 2	PM 2936	Lot 2		Space	Assigned
17	38631	Fremont Blvd	Apt 1204	94536		Floor 2	PM 2936	Lot 2		Space	Assigned
18	38631	Fremont Blvd	Apt 1205	94536		Floor 2	PM 2936	Lot 2		Space	Assigned
19	38631	Fremont Blvd	Apt 2212	94536		Floor 2	PM 2936	Lot 2		Space	Assigned
20	38631	Fremont Blvd	Apt 2213	94536		Floor 2	PM 2936	Lot 2		Space	Assigned
21	38631	Fremont Blvd	Apt 2214	94536		Floor 2	PM 2936	Lot 2		Space	Assigned
22	38631	Fremont Blvd	Apt 2215	94536		Floor 2	PM 2936	Lot 2		Space	Assigned
23	38631	Fremont Blvd	Apt 3222	94536		Floor 2	PM 2936	Lot 2		Space	Assigned
24	38631	Fremont Blvd	Apt 3223	94536		Floor 2	PM 2936	Lot 2		Space	Assigned
25	38631	Fremont Blvd	Apt 3224	94536		Floor 2	PM 2936	Lot 2		Space	Assigned
26	38631	Fremont Blvd	Apt 3225	94536		Floor 2	PM 2936	Lot 2		Space	Assigned
27	38631	Fremont Blvd	Apt 4230	94536		Floor 2	PM 2936	Lot 2		Space	Assigned
28	38631	Fremont Blvd	Apt 4231	94536		Floor 2	PM 2936	Lot 2		Space	Assigned
29	38631	Fremont Blvd	Apt 4232	94536		Floor 2	PM 2936	Lot 2		Space	Assigned
30	38631	Fremont Blvd	Apt 4234	94536		Floor 2	PM 2936	Lot 2		Space	Assigned
31	38631	Fremont Blvd	Apt 4235	94536		Floor 2	PM 2936	Lot 2		Space	Assigned
32	38631	Fremont Blvd	Apt 1300	94536		Floor 3	PM 2936	Lot 2		Space	Assigned
33	38631	Fremont Blvd	Apt 1301	94536		Floor 3	PM 2936	Lot 2		Space	Assigned
34	38631	Fremont Blvd	Apt 1302	94536		Floor 3	PM 2936	Lot 2		Space	Assigned
35	38631	Fremont Blvd	Apt 1303	94536		Floor 3	PM 2936	Lot 2		Space	Assigned
36	38631	Fremont Blvd	Apt 1304	94536		Floor 3	PM 2936	Lot 2		Space	Assigned
37	38631	Fremont Blvd	Apt 1305	94536		Floor 3	PM 2936	Lot 2		Space	Assigned
38	38631	Fremont Blvd	Apt 2312	94536		Floor 3	PM 2936	Lot 2		Space	Assigned

Record	Address No	Street	Unit No	Zip Code	Bldg	Floor	Subdivision No.	Land Lot	Condo Lot	Address Type	Status
39	38631	Fremont Blvd	Apt 2313	94536		Floor 3	PM 2936	Lot 2		Space	Assigned
40	38631	Fremont Blvd	Apt 2314	94536		Floor 3	PM 2936	Lot 2		Space	Assigned
41	38631	Fremont Blvd	Apt 2315	94536		Floor 3	PM 2936	Lot 2		Space	Assigned
42	38631	Fremont Blvd	Apt 3322	94536		Floor 3	PM 2936	Lot 2		Space	Assigned
43	38631	Fremont Blvd	Apt 3323	94536		Floor 3	PM 2936	Lot 2		Space	Assigned
44	38631	Fremont Blvd	Apt 3324	94536		Floor 3	PM 2936	Lot 2		Space	Assigned
45	38631	Fremont Blvd	Apt 3325	94536		Floor 3	PM 2936	Lot 2		Space	Assigned
46	38631	Fremont Blvd	Apt 4330	94536		Floor 3	PM 2936	Lot 2		Space	Assigned
47	38631	Fremont Blvd	Apt 4331	94536		Floor 3	PM 2936	Lot 2		Space	Assigned
48	38631	Fremont Blvd	Apt 4332	94536		Floor 3	PM 2936	Lot 2		Space	Assigned
49	38631	Fremont Blvd	Apt 4334	94536		Floor 3	PM 2936	Lot 2		Space	Assigned
50	38631	Fremont Blvd	Apt 4335	94536		Floor 3	PM 2936	Lot 2		Space	Assigned
51	38631	Fremont Blvd	Apt 1400	94536		Floor 4	PM 2936	Lot 2		Space	Assigned
52	38631	Fremont Blvd	Apt 1401	94536		Floor 4	PM 2936	Lot 2		Space	Assigned
53	38631	Fremont Blvd	Apt 1402	94536		Floor 4	PM 2936	Lot 2		Space	Assigned
54	38631	Fremont Blvd	Apt 1403	94536		Floor 4	PM 2936	Lot 2		Space	Assigned
55	38631	Fremont Blvd	Apt 1404	94536		Floor 4	PM 2936	Lot 2		Space	Assigned
56	38631	Fremont Blvd	Apt 1405	94536		Floor 4	PM 2936	Lot 2		Space	Assigned
57	38631	Fremont Blvd	Apt 2412	94536		Floor 4	PM 2936	Lot 2		Space	Assigned
58	38631	Fremont Blvd	Apt 2413	94536		Floor 4	PM 2936	Lot 2		Space	Assigned
59	38631	Fremont Blvd	Apt 2314	94536		Floor 4	PM 2936	Lot 2		Space	Assigned
60	38631	Fremont Blvd	Apt 2415	94536		Floor 4	PM 2936	Lot 2		Space	Assigned
61	38631	Fremont Blvd	Apt 3422	94536		Floor 4	PM 2936	Lot 2		Space	Assigned
62	38631	Fremont Blvd	Apt 3423	94536		Floor 4	PM 2936	Lot 2		Space	Assigned
63	38631	Fremont Blvd	Apt 3424	94536		Floor 4	PM 2936	Lot 2		Space	Assigned
64	38631	Fremont Blvd	Apt 3425	94536		Floor 4	PM 2936	Lot 2		Space	Assigned
65	38631	Fremont Blvd	Apt 4430	94536		Floor 4	PM 2936	Lot 2		Space	Assigned
66	38631	Fremont Blvd	Apt 4432	94536		Floor 4	PM 2936	Lot 2		Space	Assigned
67	38631	Fremont Blvd	Apt 4434	94536		Floor 4	PM 2936	Lot 2		Space	Assigned
68	38631	Fremont Blvd	Apt 4435	94536		Floor 4	PM 2936	Lot 2		Space	Assigned

TABLE B: Rescinded Address

Record	Address No.	Street Name	Unit No.	Zip Code	Bldg	Floor	Subdivision No.	Land Lot	Condo Lot	Address Type	Address Status
1	38651	Fremont Blvd		94536			PM 2936	Lot 2		Tenant Space	Rescinded